



CONNAUGHT

At the beating heart of Mayfair Village, the Connaught redefines the British luxury experience. It is an expertly judged blend of tradition with the utmost modernity.

EXTERIOR



COBURG BAR



HÉLÈNE DARROZE AT THE CONNAUGHT



AMAN SPA POOL



DELUXE KING BEDROOM



Connaught

Within this most revered of hotels are event spaces that marry innovation of facilities with tradition of service. Thanks to expert and dedicated staff the Connaught becomes a stunning and very private place to entertain; from a handful of close friends in the Regency Room to hundreds of guests in Mayfair's first new ballroom in over 80 years.

KEY FACTS:

Ten unique private spaces, with a hand-picked team at your disposal when you need them, and discreet when you don't.

Mayfair Room

Designed by Guy Oliver, this is the newest ballroom to be built in Mayfair for 80 years.

Maple Room

This versatile room can be used independently, split in two, or in conjunction with the Mayfair Room.

Regency Room

Described as the Connaught in microcosm, it is one of our most popular rooms. It can now be used in conjunction with the Carlos Room.

Carlos Room

The newest and arguably most stunning event space, where intricately detailed windows flood the room with daylight.

Georgian Room

Recently restored by Guy Oliver, this is an intimate setting for meetings and dining.

Silver and Oak Rooms

Among the most discreet meeting spaces, these rooms enjoy natural daylight and windows overlooking the Garden of Illusion.

Sommelier's Table

Dine overlooking our limestone-clad cellar housing over 6,000 vintage wines. Enjoy a bespoke food menu dedicated to your wine preferences.

Hélène Darroze at the Connaught – Exclusive use

With Hélène Darroze at the Connaught all to yourselves, you and your guests will participate in a very personal culinary journey.

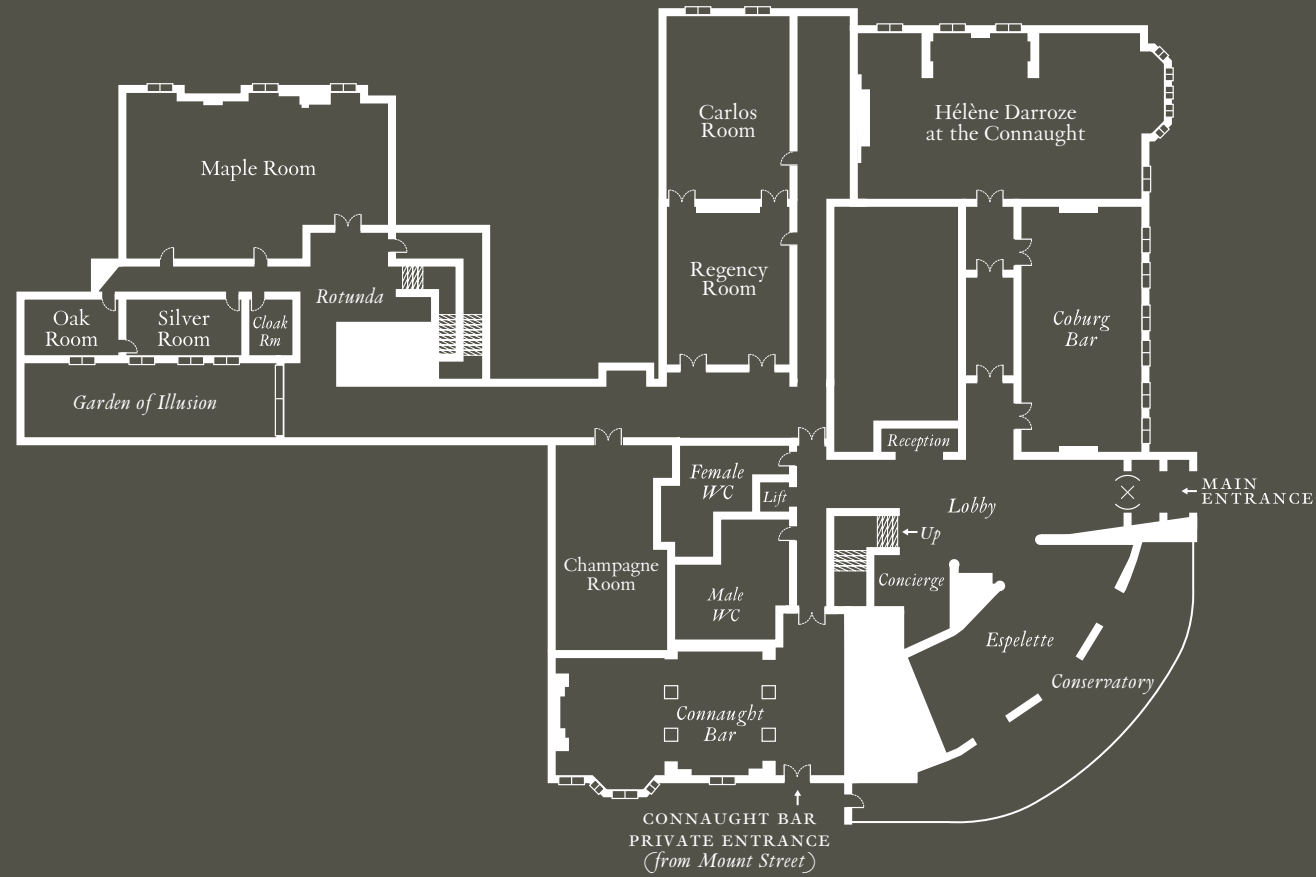
Champagne Room – Exclusive use

Inside this sanctuary we invite you and your guests to indulge in an impeccably perfect champagne experience.

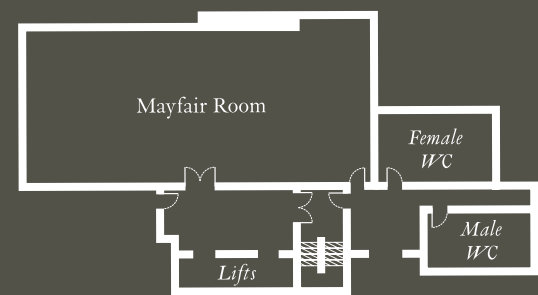
- Each of our rooms and suites couples supreme comfort with contemporary touches; each one has bespoke and inherited furniture, beds dressed in the finest linen and all have benefited from beautiful refurbishments by leading interior designers Guy Oliver and David Collins.
- The Aman Spa is a hidden haven of peace and tranquillity.
- Discover the two Michelin-starred Hélène Darroze at the Connaught, delicious all-day dining in Espelette, the comfortable and intimate Coburg Bar or the Connaught Bar for award-winning cocktails.

Connaught Floor Plan

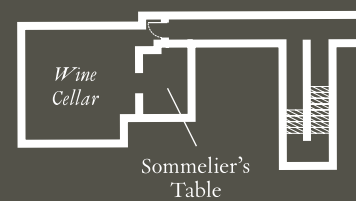
GROUND LEVEL



LOWER GROUND LEVEL



BASEMENT LEVEL



FIRST FLOOR



Key □ Pillar ■ Wall ▨ Stairs □ Window ∩ Single Door ∪ Double Doors (x) Revolving Door

Connaught

ROOM SIZES & CAPACITIES

	TOTAL AREA		DIMENSIONS		CEILING HEIGHT M	CAPACITIES							
	M ²	FT ²	M	FT		REC	DIN	THE	CLA	HOL	U-SH	CAB	BOA
MAYFAIR ROOM	151	1625	18 x 8	59 x 26	3.5 > 3.5	200	120	120	70	44	50	80	60
MAPLE ROOM	99	1065	13.5 x 6	44 x 20	2.35 > 2.2	100	60	50	32	34	20	30	36
SILVER ROOM	18	194	3 x 6	10 x 20	2.3 > 2.17		12						12
OAK ROOM	12	129	3 x 4	10 x 13	2.3 > 2.17	8	6						4
REGENCY ROOM	40	442	8 x 5	26 x 17	3.75 > 3.45	40	30	20					
CARLOS ROOM	40	442	8 x 5	26 x 17	3.75 > 3.45	40	30	20					
GEORGIAN ROOM	24	247	6 x 4	19 x 13	3.2 > 3.2		10						10
SOMMELIER'S TABLE					2.24 > 2.24	8							
HÉLÈNE DARROZE AT THE CONNAUGHT							60						

REC - RECEPTION; DIN - DINNER; THE - THEATRE; CLA - CLASSROOM; HOL - HOLLOW SQUARE; U-SH - U-SHAPE; CAB - CABARET; BOA - BOARDROOM

REGENCY ROOM



SILVER ROOM



MAPLE ROOM



CARLOS ROOM



“I would like to officially thank you for your professionalism and excellent service provided to my executive guests. I knew I could expect a high level of service at the Connaught but this was beyond my expectations.”

